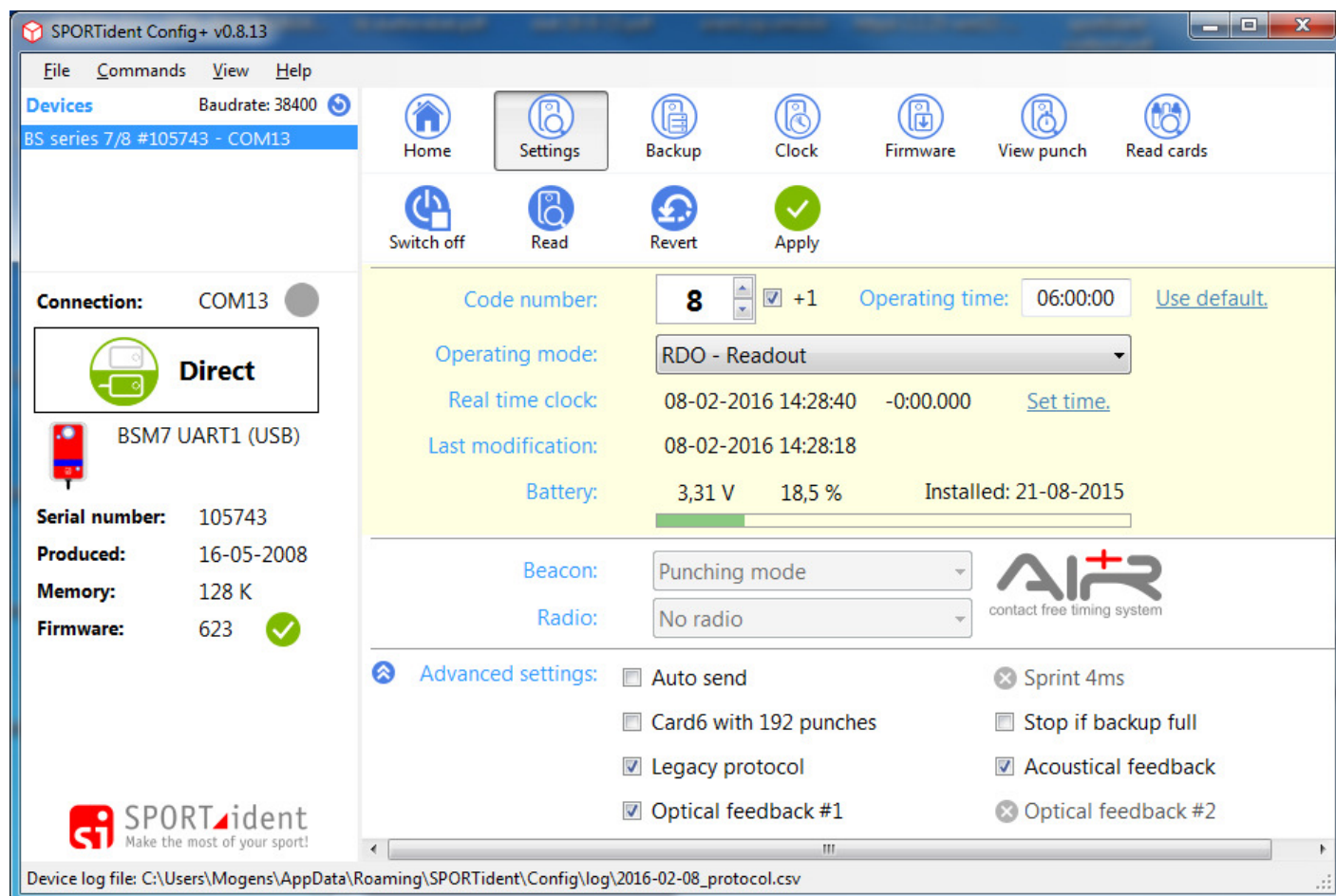


# Hvordan sætter man aflæser enhed til oe2003

I forbindelse med at flere nu er begyndt at bruge MEOS og OE2010 skal man checke at aflæser enheden står i rigtig mode, da den kun kan aflæse ved brug af standart protocol i oe2003

Si-config + og andre programmer kan sætte den i udvidet mode uden man opdager det



Her i si-config + er det under avanceret settings at Legacy protocol skal være hakket af = standard protocol

I si-config er det udvidet protokol der ikke må være hakket af som vist herunder for du kan bruge den i oe2003

The screenshot shows the SI-Config software interface. The title bar reads "SI-Config Programmering basenheder - basic mode V:2.8.6 16-04-2015 - C:\Users\Mogens\AppData\Local\SP...". The menu bar includes "Instillinger", "Vis", "Kommando", "Hjælp", and "Afslut". The toolbar contains icons for a device, a USB cable, a clock, a magnifying glass, and a left arrow. The "direkte" dropdown menu is set to "COM13" with "38400,n,8,1" below it. The main interface is divided into several sections:

- Læs (Read):** A table with columns "Ser. Nr.", "Software", "Dato", and "Funktion". It shows a device with Ser. Nr. 105743, Software 623, and Dato 16-05-2008. Below this is a "Hardware" section for "BSM UART1(USB)" with a "Hukommelse" of 128 K.
- Post nr. 7:** "Aktiv tid" is set to "06:00:00". There are checkboxes for "Autosend" and "Udvidet protokol". The function is "Læs brikker (Master)".
- Status:** "Aktiv / Basis mode".
- Skriv (Write):** "Post nr." is "93", "Aktiv tid" is "06:00:00". There are checkboxes for "Autosend" and "Udvidet protokol". The date is "08-02-2016" and time is "14:30:53".
- Sluk efter programmering:** A checkbox is checked, with "(BS 7...8)" next to it.
- Nye batterier (New batteries):** A section for "Batteri status" with a table:

Batteri	Kap.	3,31 V	18% Nu
21-08-2015	2000 mAh		

- Sluk (Power off):** A yellow bar at the bottom of the settings area.

On the right side, a terminal window displays the following text:

```
SI-Config V:286 16-04-2015
Settings:
C:\Users\Mogens\AppData\Local\SPORTident\SI-
Protokolfil:
C:\Users\Mogens\AppData\Local\SPORTident\SI-
SI-Config version:286, Firmware version BS7/
Set direkte
last write: 08-02-2016 14:28:18
Read
```

The bottom right corner of the window shows the "si" logo and the date "08-02-2016".

Mogens Jørgensen  
Sportident  
[mogens@sportident.dk](mailto:mogens@sportident.dk)  
40 56 44 96