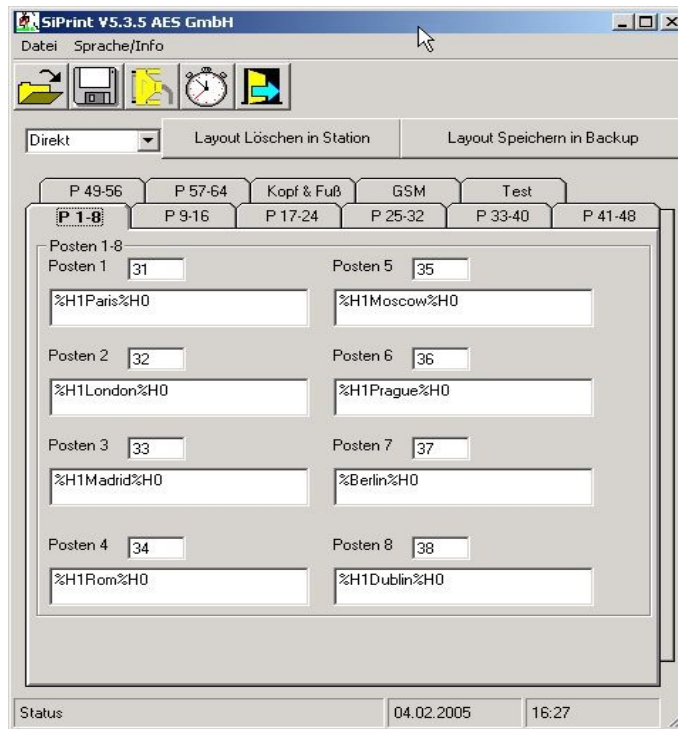


Printout layout configuration

In the user definable printout layout a number of header and foot lines can be edited. It is of special importance that control station code numbers can be replaced by ordinary text strings. PC-software "SIPrint" (www.sportident.com/sportident/download/siprint.zip) serves as interface program to define the print layout and to download the information into the printout station.



EuroSprint Across Europe

2005-02-04 10:07:03
SPORTident
SI-Card: 2110724
Start 11:32:32,8

1	Paris	11:32:34	0:02	0:02
2	London	11:32:36	0:02	0:04
3	Madrid	11:32:38	0:02	0:06
4	Amsterdam	11:32:40	0:02	0:08
Finish		11:32:41,5	0:01	0:08,7

service and support:
www.sportident.com

SPORTident - System

Orienteering

The sport for the thinking runner

2005-02-04 10:13:30
SPORTident
SI-Card: 2112259
Start 10:12:40,3

1	31	10:12:42	0:02	0:02
2	32	10:12:44	0:02	0:04
3	33	10:12:46	0:02	0:06
4	34	10:12:48	0:02	0:08
5	35	10:12:51	0:03	0:11
6	36	10:12:52	0:01	0:12
7	37	10:12:54	0:02	0:14
8	38	10:12:55	0:01	0:15
9	39	10:12:56	0:01	0:16
10	40	10:12:58	0:02	0:18
Finish		10:13:00,3	0:02	0:20,0

service and support:
www.sportident.com

SPORTident - System

Instruction cards

Using instruction cards the printout station executes routines directly and without any control by PC. There are four instruction cards:

- **Service/Off**
The printout station switches into service mode for 10 minutes.
- **Start**
A “start” - stamp in the printout station initiates a common start time (mass start) for all SI-cards read-in afterwards. However if there is a start punch in the SI-card too so this punch will be used for time computation instead.
- **Print results**
The printout stations ranks all SI-cards read in according to their total running time. Sorting into different “courses” is done automatically based on the evaluations of the first six punches in the SI-card.
- **Clear backup**
Printout station's backup memory is cleared.



Subsequent evaluation

Card data stored in the printout station can be transmitted to the PC for further evaluation. For that purpose the printout station has to be connected to a serial interface of the PC by using the attached adapter cable (“zero-modem-cable”). Evaluation software is on the SPORTident website.

Thermal-printer with PC

The thermal-printer GPT-4378 can be used as an output-device for programs running on the PC. Printer adjustments have to be changed manually, see A.3. The connection to the PC is possible by serial cable or infra-red-port. Printer-drivers for WIN2000 and W-XP are on the SPORTident website.

Adjustments and maintenance

Printout-station

The SPORTident-printout-station BS7-P is nearly free of service needs. Real time clock adjustment and reprogramming have to be done by using PC-software **SI-Config**. For correct time computing it is important that printout station's real time clock is synchronized according to the other SI stations' clocks.

Thermal-printer GeBE Flash (GPT-4378)

The thermal-printer GPT-4378 is configured to operate with the SPORTident printout station. Settings are listed in appendix A.3. Details of the programming process are described in the printer's manual. For the printer only paper authorised by the manufacturer should be used. Non standardised paper can lead to a higher wear out of the print-head, shorter life-time and loss of guarantee.

Charging of thermal-printer GPT-4378

The thermal-printer GeBE GPT-4378 is a very powerful and power-efficient device.

The thermal-printer has an internal charger for the accumulator. Charging is automatically activated when the external DC adapter is connected with the printer.

Note! Please use only the enclosed power supply unit. Other power supply units can destroy the accumulator.

Using a fully charged printer more than 500 typical printout sheets can be produced before a charging cycle is needed.

Important information

- To charge the printer only the power supply device supplied should be used (6V/0,8A, transformer-type). Especially power switch adapters can not be used and are not able to charge printers battery.
- The charging process is indicated by a blinking green LED and the completion of the charging process is indicated by "green lamp on". The printer should still be kept connected with the power supply device for some hours (3-5h) after having achieved the status "green lamp on".
- The printer's battery can be recharged about 300 times. But with ongoing lifetime the battery capacity will become smaller. 300 typical printout sheets can be printed in any case.

Appendix

A.1. Settings for thermal-printer GPT-4378 - operating with printout-station BS7-P

```
Welcome to the OPD menu 1.05
Setup timeout after 10 minutes
Actual Printer settings:

Ubat: 5.4V
Tbat: 20°C

Firmware: GE-3300

Density: 25
Speed/Quality: med (64)/Low
Interface: RS232/USB/Blue
COM: 4800 ,n,8,Tx+
Sleep time: 5 sec
Font #: 2
Char. format: D0,W0,H0,S0,48

? Change actual settings

Press ENTER to change
Press NEXT to skip
Press ENTER+NEXT to save and exit
```

- Accounting to PC by the serial interface

```
Welcome to the GeBE OPD menu 1.03
Setup timeout after 10 minutes
Actual Printer settings:

Ubat: 5.3V
Tbat: 16°C

Firmware: GE-3233

Density: 25
Speed/Quality: medLQ 64/48
Interface: RS232/USB/Blue
COM: 115200,n,8,Tx+
Sleep time: 1 min
Font #: 2
Char. format: D0,W0,H0,S0,48

? Change actual settings

Press ENTER to change
Press NEXT to skip
Press ENTER+NEXT to save and exit
```

A.2. COM-port-settings on the PC for connection with the printout-station

baud-rate: 115 200 Bit/sec
number of bits: 8
parity: no
stop-bit: 1
hardware handshake: Xoff/Xon



www.sportident.com
support@sportident.com

SPORTident GmbH, Markt 14
D-99310 Arnstadt, Germany
phone: +49-3628-78300
fax: +49-721-151313118