



SPORTident BSx7/8 firmware 623 – Release notes

SPORTident has released a new firmware (version 623) for the following devices

- **BSF7:** SPORTident control station series 7
- **BSF8:** SPORTident control station series 8
- **BSM7:** SPORTident master station series 7 (USB as well as RS-232)
- **BSM8-D-USB:** SPORTident USB master station series 8
- **BS7-P:** SPORTident printer station series 7
- **BS7-S:** SPORTident sprint station series 7
- **BS8-Master:** SPORTident control station master series 8

The new firmware version is available together with the latest version of SPORTident Boot (Version 2.19 or later). Please download the setup of SPORTident Boot from the software download section of www.sportident.com and install the application.

Update to the latest firmware version is supported for every listed device above running firmware version 500 or later.

You are also recommended to upgrade to the latest SPORTident Config application (version 2.8.6 or later) that includes compatibility and improvements for all features of the latest firmware. SPORTident Config can also be found in the software download section of www.sportident.com.

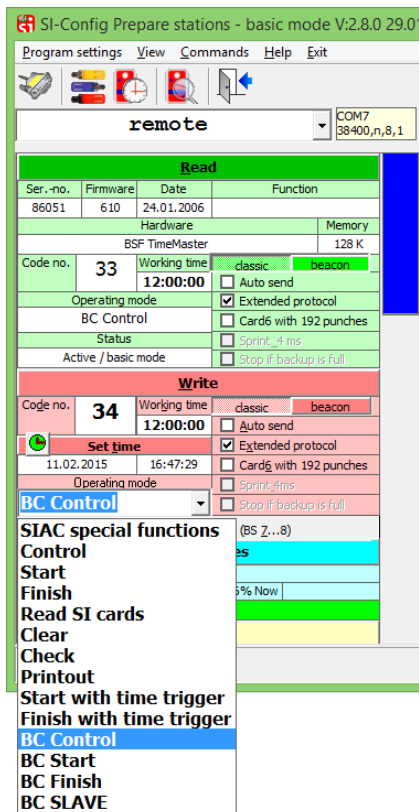
The major topics covered by this release note are the following:

- Introduction of beacon operating modes for BSx7/8 to work together with SIAC
- Introduction of SIAC special functions operating modes
- Introduction of start clock feature
- Extended functionality of SI-Master
- Miscellaneous improvements and fixes

Changes in the firmware since version 580:

Introduction of beacon operating modes for BSx7/8 to work together with SIAC

The SPORTident classic equipment grows in the Air+ direction. The new beacon operating modes allow all BSx7/8 stations to operate in a **mixed mode**. Punching all classic SPORTident Cards is still possible (**direct punching**) while the new SPORTident ActiveCard will be able to record the control point at a range of 60 cm above and 30 cm around the station (**remote punching**).



The new operating modes are possible to be configured with the **latest version** of **SPORTident Config** and will be enabled for all BSx7/8 stations running firmware 618 and later.

Beacon modes are available with the operating modes **Start (BC Start)**, **Finish (BC Finish)** and **Control (BC Control)**. BC Slave is only available for BS11.

The beacon operating modes offers more **settings parameters** to be configured. SPORTident Config shows a tab to switch between **Classic** and **Beacon** settings view. The parameters and its meanings are the same as for BS11 devices. **Punching mode** is must be enabled for these operating modes.

Stations running in beacon operating mode **must be activated** using a **direct punch**. Service/Off stick **does NOT enable** the beacon field of the station but switches to service mode/standby only. The device will have about **ten times the battery consumption** as in non beacon mode when it is active. A BSF8 with a brand new battery will operate about **1 500 hours** before the battery is dead, a **BSF7** about **double** the time.

If you will **solely** use SPORTident ActiveCard (remote punching) you need to be aware that the **operating time** counter is **not reset** when a SIAC passes by. Therefore you are required to set the operating time **long enough** to end after your event. A setting of **12 hours** minimum is **recommended**. Afterwards you are recommended to **turn off** your stations with the **Service/Off** stick to save battery life.



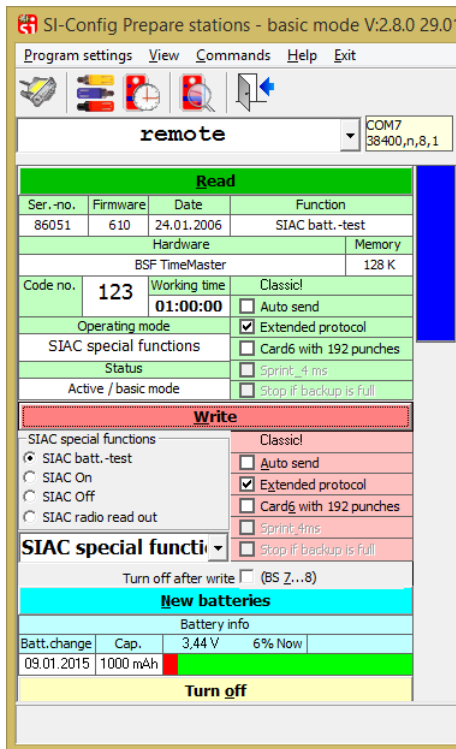
Introduction of SIAC special functions operating modes

The SPORTident BSx7/8 can be programmed in various operating modes to integrate with the SPORTident Air+ system.

The following new **operating modes** are available:

- **SIAC Battery test** – Measures the battery of the punched SIAC and indicates its status by beeping/blinking and displaying its voltage. Critical battery voltage is indicated by no beeping/blinking and the display caption “LOW”.
- **SIAC on** – Activates the beacon interface of the SIAC to enable remote punching, does not modify the card memory, also the card does not need to be cleared
- **SIAC off** – Deactivates the beacon interface of the SIAC to disable remote punching, does not modify the card memory
- **SIAC radio readout** – Instructs the SIAC to send its memory via SRR (short range radio) to the next available receiver device (SRR Dongle or SI GSMDN), does not modify the card memory, beacon interface of the card does not need to be activated

SPORTident BSx7/8 stations that are configured as one of the SIAC special functions operating modes do not perform any other action/mode (like control, start ...).



The new operating modes are possible to be configured with the **latest version** of **SPORTident Config** and will be enabled for all BSx7/8 stations running firmware 618 and later.

Choose “SIAC special functions” operating mode and select the mode you want to use from the box above.



Introduction of start clock feature

The SPORTident BSx7/8 offers a new feature build in the latest firmware:

A **start clock** feature can be activated on all BSx7/8 station that are configured in **start operating mode**.

The feature can be **activated** with the **Service/Off** stick. When you punch a station in standby mode with your Service/Off stick, it will **cycle** between the following modes:

1. **Service mode** (Display "**SERVMO**")
Displays the most important settings,
switches back to standby mode after 5 minutes
2. **Start clock** (Display "**STACLK**")
Displays toggles between device time and "**STACLK**" and
stays in this mode according to the operating time
3. **Standby mode** (Display off)

When the device is in start clock mode, it **beeps** 4 seconds before every **full minute**: **beep beep beep beep beeeeeeep**. The **start** operating mode is **still available** when a SPORTident Card is punched but it is not recommended to use it when start clock feature is active as participants could mix up the confirm signal of the card with the start clock signal. The battery consumption of the device is a bit higher than usual as every beep and blink creates a consumption peak.

When the start clock feature is enabled in the device, it disregards the optical/acoustical feedback settings and always beeps/blinks.



Extended functionality for SI-Master station

The functionality of the SI-Master station has been **enhanced**. When you punch a station in standby mode with your **Service/Off** stick, it will **cycle** between the following modes:

1. **Service mode** (Display "**SERVMO**")
Displays the most important settings,
switches back to standby mode after 5 minutes
2. **Time master** (Display "**TIMEMA**")
The station will sync and set the time of every touched station
3. **Extended master** (Display "**EXT MA**")
The station will set operating time, sync and set the time and clear backup memory of every touched station
4. **Standard master** (Display "**STD MA**")
New feature: Will sync and set the time and restore the standard configuration of every touched station that has been backed up in advance using SPORTident Config+
5. **Start clock** (Display "**STACLK**")
Only available if the device is programmed in start operating mode,
see start clock feature description
6. **Standby mode** (Display off)



Miscellaneous improvements and fixes

Additional improvements and fixes to the firmware:

- **Changes since firmware 614:**
Compared to firmware 614, we have improved handling of SI-Card5 and changed some additional details.
- **Changes since firmware 618:**
 - Improvements:
 - clearing of SI-Card5 is faster (below 7 seconds)
 - readout of SI-Card5 is more reliable and faster
 - Fixed issues:
 - fixed a clock issue when the station woke up from standby
 - fixed erroneous beacon pulse after readout
 - fixed blocking of serial connection (BS7-P) after incomplete readout and printout of cards
 - fixed faulty (too short) beep after beep instruction (0xF8)
 - fixed page overflow issue when writing punch records to backup memory in non extended protocol mode
 - fixed an issue when reading cards to the backup with BSF7/8
- **SI-Master station: Extended master mode**
The operating time is set to a value of 12 hours, if the touched station is programmed in one of the beacon operating modes and the current value is less than 12 hours. Higher values are disregarded.
- **fCard handling**
If a SPORTident fCard is punched on a station that has the extended protocol flag disabled, the device will automatically enable the extended protocol flag because this is required for fCard to work.
- **Remote time setting with PC software**
When a remote station time is set via PC software, the master station will set its own time to the time delivered by the PC software and afterwards will set the time of the remote station itself. This ensures a higher accuracy of time setting as the PC software does not need to compensate the round trip time from the PC interface via coupling interface into the remote station.
- **SI-Card 6 handling**
The general performance of SI-Card 6 handling has been improved and made more secure.



- **Service mode display enhanced**

The service mode now displays the following information (cycling every 3 seconds)

- "SERVMO" - indicates service mode active, station will switch to standby mode after 5 minutes
- [TIME] - displays the current time of the device
- [MODE] - displays the operating mode and code number (if applicable)
- OFFxyz - display the operating time in minutes
- SWxyz - displays the current firmware version
- PC xyz - displays the number of punch records in the backup memory
- BATxyz - displays the last measured battery voltage
- CAPxyz - displays the battery consumption in percent